

Piano

Caught A Vision Of You

Robert Kowtko, Gregory Pichler

Robert Kowtko, Gregory Pichler

Allegro ♩ = 132

130

132

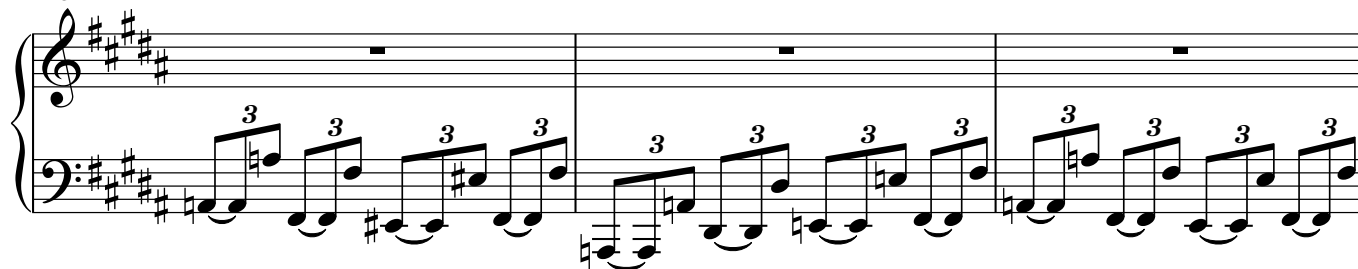
135

138

141

143

146



163

Measures 163 and 164 of a piano piece. The key signature is D major (two sharps). The right hand has whole rests. The left hand plays a triplet of eighth notes in each measure, with a descending chromatic line: G4, F#4, E4 in measure 163, and D4, C#4, B3 in measure 164.

165

Measures 165 and 166. The right hand has whole rests. The left hand continues the triplet pattern: A3, G#3, F#3 in measure 165, and E3, D#3, C#3 in measure 166.

167

Measures 167, 168, and 169. The right hand has whole rests. The left hand continues the triplet pattern: B2, A#2, G#2 in measure 167; F#2, E#2, D#2 in measure 168; and C#2, B#1, A#1 in measure 169.

170

Measures 170, 171, and 172. The right hand has whole rests. The left hand continues the triplet pattern: G#1, F#1, E#1 in measure 170; D#1, C#1, B#0 in measure 171; and A#0, G#0, F#0 in measure 172.

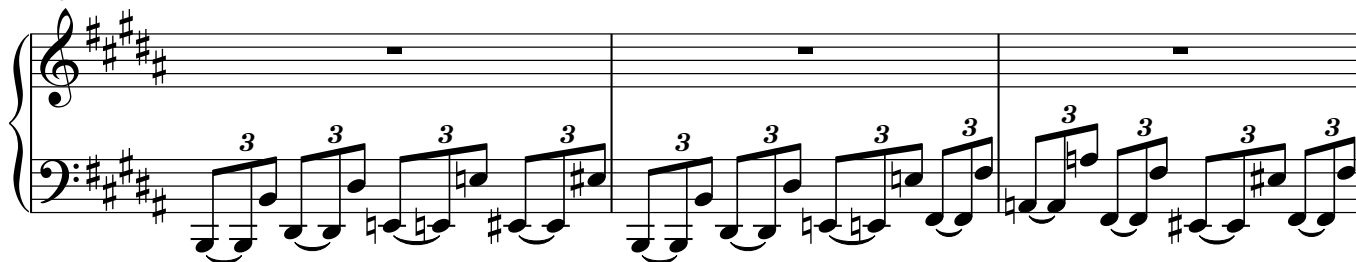
173

Measures 173, 174, and 175. The right hand has whole rests. The left hand continues the triplet pattern: E#0, D#0, C#0 in measure 173; B#0, A#0, G#0 in measure 174; and F#0, E#0, D#0 in measure 175.

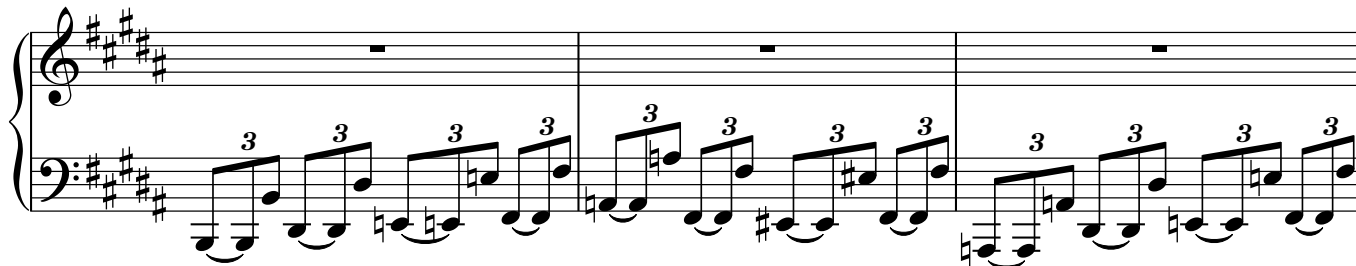
176

Measures 176 and 177. The right hand has whole rests. The left hand continues the triplet pattern: C#0, B#0, A#0 in measure 176; and G#0, F#0, E#0 in measure 177.

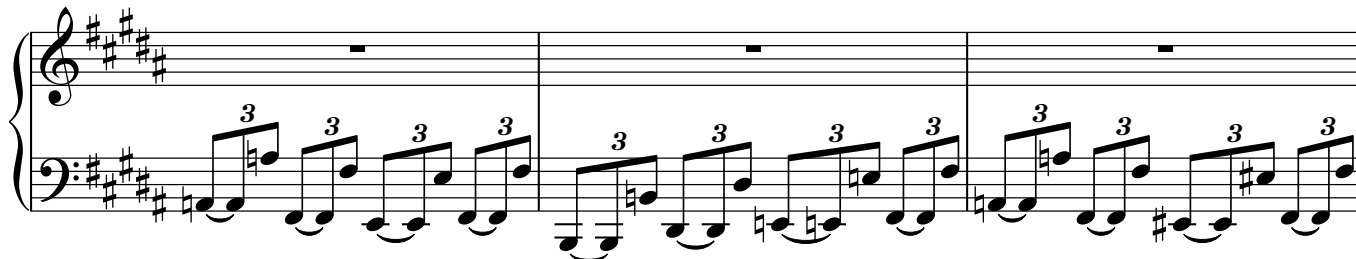
178



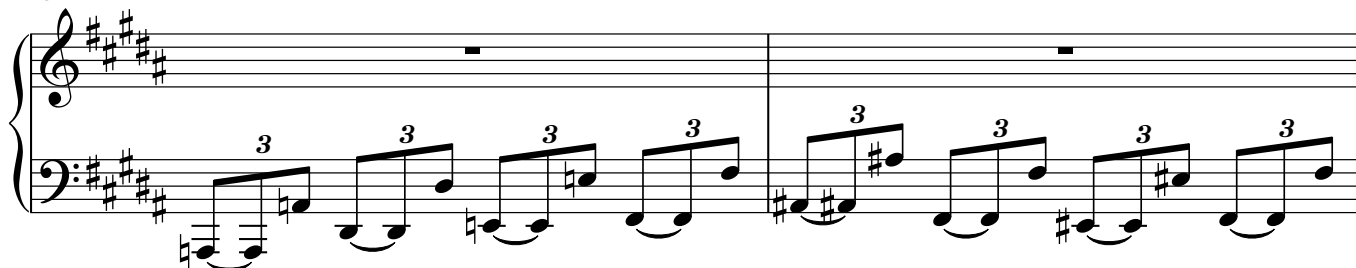
181



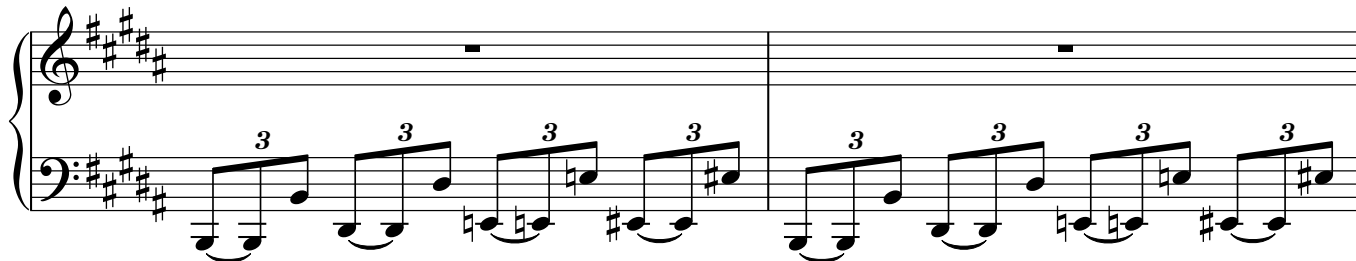
184



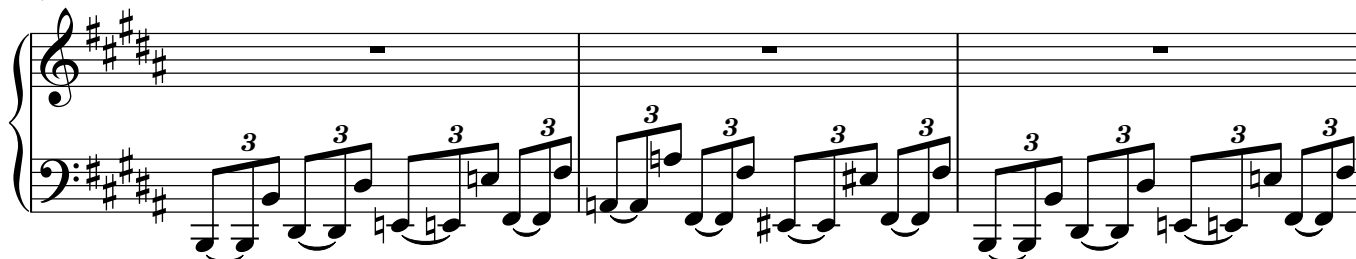
187



189



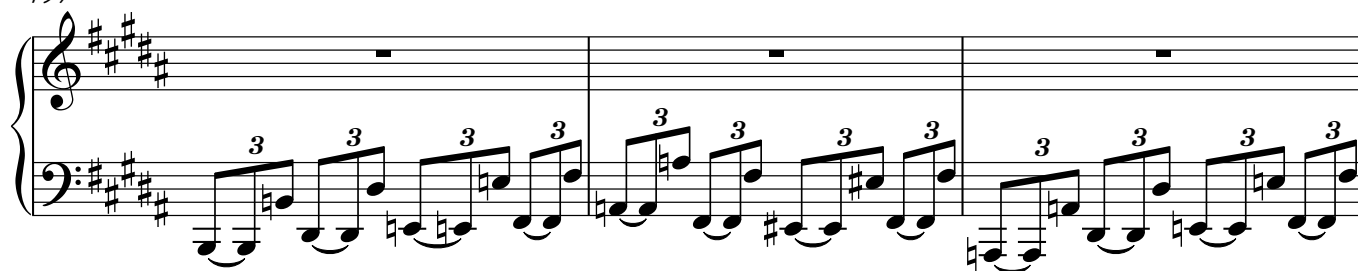
191



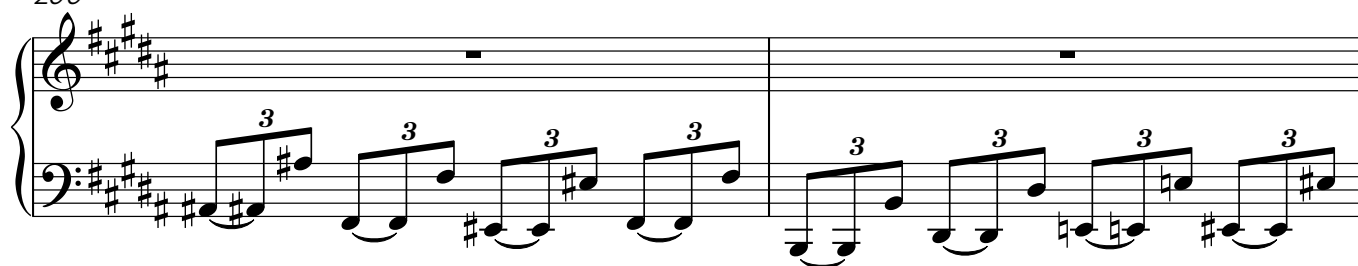
194



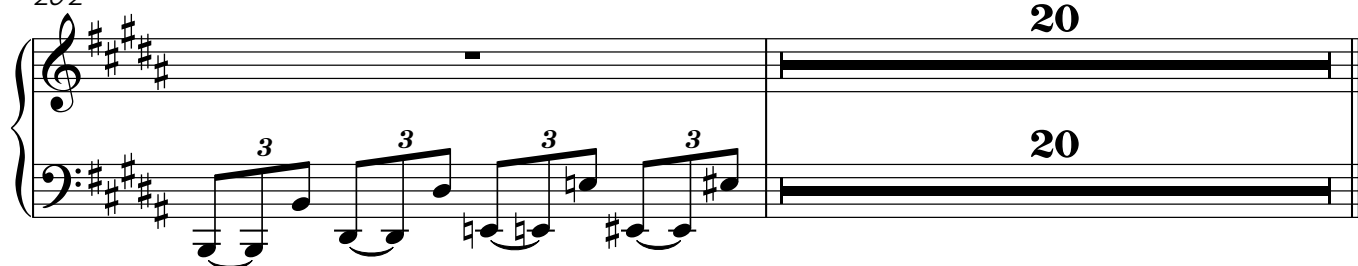
197



200



202



20

20